

CSPI RFP Webinar:

Farm-to-Food Bank Policy Campaign



Logistics for Today's Webinar

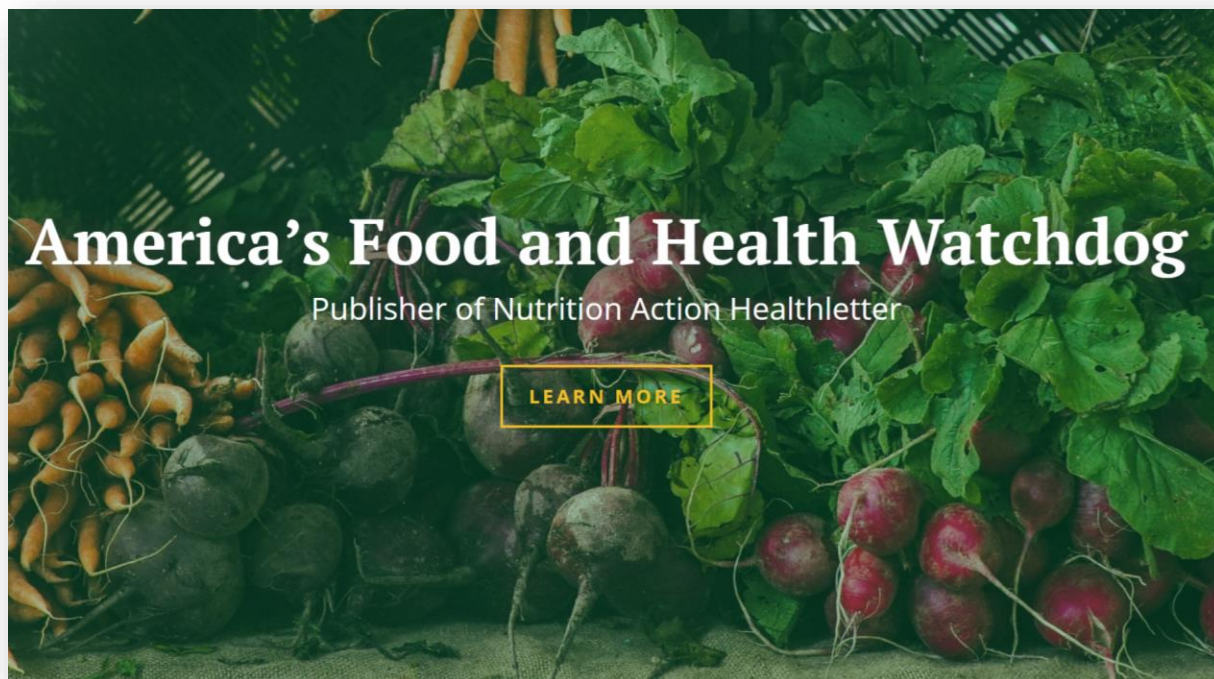
Please keep your microphone on mute.

We will have a 15-minute presentation followed by 45 min for Q&A and discussion.

Questions can be asked through the chat box or the raise hand feature.

This webinar will be recorded.

Center for Science in the Public Interest (CSPI)

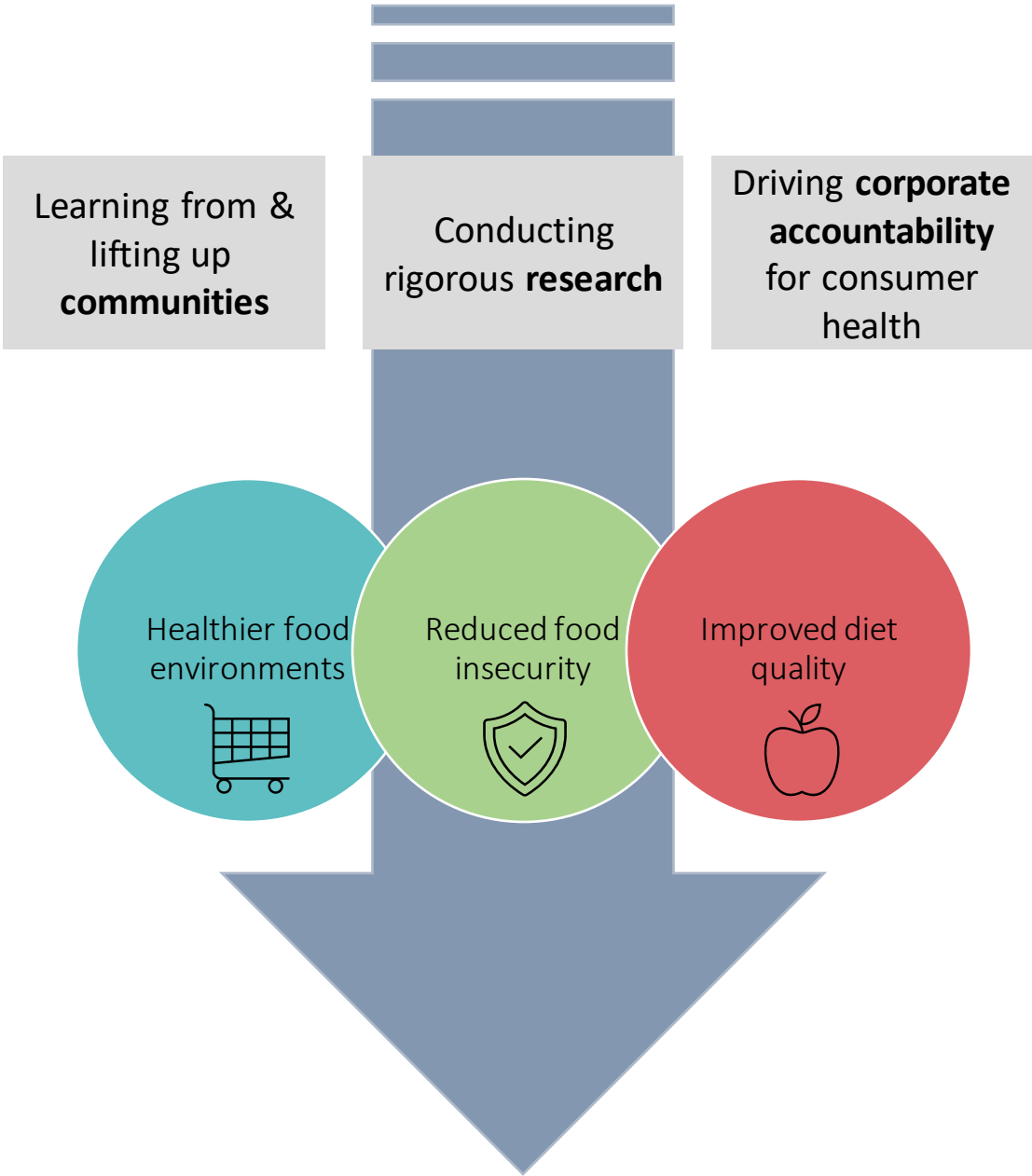


Our Strategies:

- National, state, local policy
- Education (newsletter, social media)
- Advocacy (regulatory, legislative)
- Litigation

A leading public health advocacy organizations with a 50-year record of fighting for science in the public interest and working to improve the food environment for all.

CSPI'S
Public Health
Vision for
Healthy Food
Access



Background on the Opportunity

In 2020, From Now on Fund awarded CSPI a grant to advance the field of healthier food banking through research and advocacy for federal and state policies.

Our goal is to increase the proportion of healthy, culturally relevant food distributed through food banks, as compared to the distribution of unhealthy items, like sugary beverages and sweet baked goods.

One policy recommendation from [Policy Approaches to Healthier Food Banking](#), is for states to implement direct-spending programs supporting farm-to-food bank donations.



State Policy Campaign:

Strengthen Farm-to-Food Bank Programs Through State Funding

Funding up to \$30K in total costs; for up to 6 months

We are accepting applications for proposals to develop a statewide policy campaign that aims to establish state funding for a Farm-to-Food Bank program.

Policy campaign planning activities should include, but are not limited to:

- Community engagement and building stakeholder support
- Developing communications strategy and materials
- Developing a legislative strategy and implementation plan

Priority states: Alabama, Arizona, Arkansas, California, Hawaii, Louisiana, Mississippi, New Mexico, North Carolina, Oklahoma

For this opportunity, we are **not** funding:

- direct service programs, pilots, and capital projects
- city- or county-level campaigns

What's requested in the application?

Organization information

- Contact information
- Address (Street, City, County, State, Zip Code)
- EIN/Tax ID, if applicable
- Demographic information
- Overview of organization's work and leadership

Funding request

- Total funding amount requested
- Detailed budget upload

Project details

- Project title
- Estimated duration
- Geographic focus
- Project summary and rationale
- Project partners
- Project activities, timeline, and deliverables
- Potential obstacles
- Past and present strategies to advance equity

References

Available Resources from CSPI

At CSPI, we have several ways which we aim to support grantees, including:

- Messaging and communications support, including from staff as spokespeople with the media, testimony, and articles;
- Technical assistance on legal, policy, and science;
- Support with grassroots organizing, grassroots engagement, and coalition building;
- Support with state and federal lobbying;
- Opportunities to learn from fellow and past grantees and experts through regular meetings and webinars.

See also:

- [2022 Grant Applicant Guide](#)

Next Steps

- CSPI will circulate responses to questions / follow-up as needed
- **Application submission deadline = June 12, 2022**
- Contact our CSPI team if you have specific questions or want to discuss a campaign idea

For more information:

CSPI Grant Opportunities webpage

cspinet.org -> Get Involved -> Grant Opportunities

- [Campaign to Strengthen Farm-to-Food Bank Programs Through State Funding](#)
- [How to Apply](#)

Please reach out to us at grants@cspinet.org for:

- General RFP or application inquiries
- Technical questions on our Grant Management System
- Accessibility concerns

Specific policy/campaign related questions:

Joelle Johnson, Campaign Manager: jjohnson@cspinet.org

Toby Beckelman, Senior Policy Associate: tbeckelman@cspinet.org

Q&A

General:

- Can I apply to more than one grant opportunity?
- Can these funds be used for lobbying activities?
- If I am not applying from a priority state, can I still apply?
- Can funds be used to establish a FTFB program?

Please submit questions via the Zoom Chat